

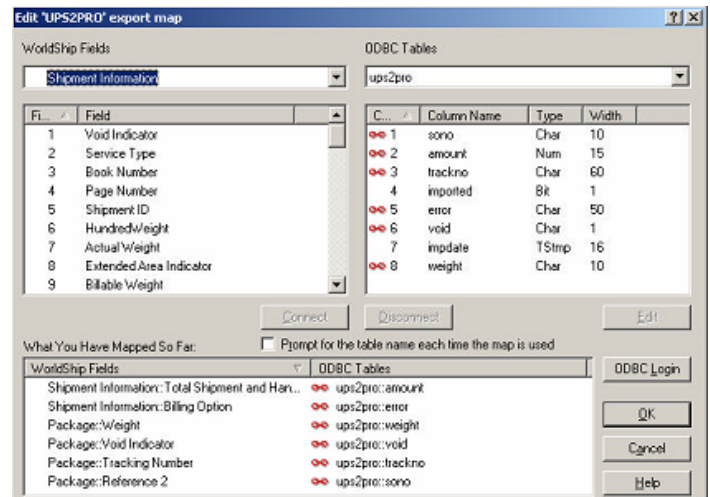
Billing:		Shipping: AAAB1	
Attn: Daniel Pinter		Attn: Daniel Pinter	
PINTER'S PACKING PLANT		Pinter's Store	
600 N 1st Street		222 2nd Stree	
Dorchester, WI 54425		Receiving Dock	
Dorchester	WI	54425	
Dorchester	WI	54425	
USA		USA	
Date	Order Date	Ship via	FOB
02/09/2010	02/09/2010	UPS	Kemah
			Website
Rep	Terr	District	Order Ref
BTON	WE		
			Discount
			0.000
			Def Loc
			KEMAH
Tax rate	Payment Terms	Disc	Days/Net
5.250	5% 10 Days, Net 30	5.0	10 30



Workflow Benefits

The UPS Worldship software link from Data Developers Plus, Corp. is a seamless and easy to use solution that links a Pro Series Accounting system* with UPS shipping software. Shipping information is entered in the UPS Worldship Link screen using the sales order number. Tracking information and shipping costs automatically post to the invoice at the time of shipping in Pro Series.

* Compatible with Pro Series 5, 6, 6.5, Sage Pro 7.x VFP & SQL



How it works: an online connection with PRO2UPS is initiated. The sales order number of the pending shipment is key entered or can be scanned in from a barcode when using the Riata RF Warehouse Management System. The shipment information is populated into WorldShip. The "Process Shipment" procedure transfers the shipping information back to Pro Series to apply the shipping charges and add the tracking numbers to the invoice.

- ⇒ UPS Worldship Link sends shipping information from Sage Pro to Worldship and returns the UPS tracking numbers and costs back to the invoice in Sage Pro!
- ⇒ Emails from within the UPS Worldship Link can be seamlessly deployed to email addresses in the Pro Series customer files.
- ⇒ UPS Worldship Link accommodates U.S. domestic and international address formats.

[More Information](#)
702-487-9711 x303 • ads@ddpcorp.com

Product specifications, availability and price are subject to change without notice.

Data Developers Plus, Corp. • 8860 S. Maryland Pkwy. #109 • Las Vegas, NV 89123 • www.ddpcorp.com