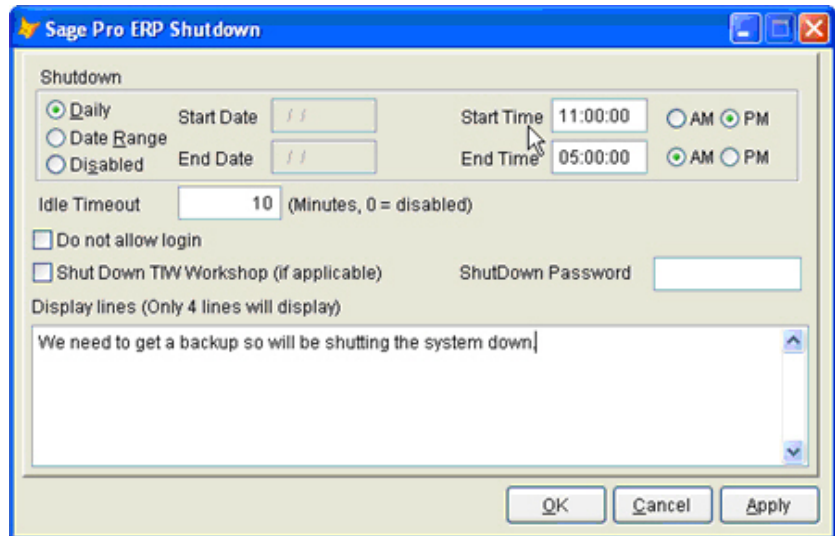
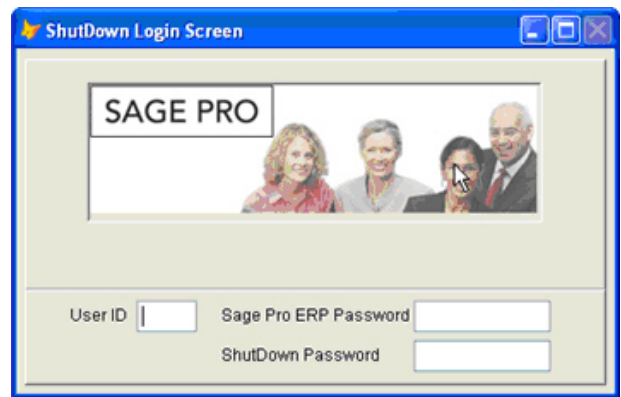


ShutDown for SBT, AccPac and Sage Pro Accounting provides the company network system administrator with user access controls to sensitive data in Sage software applications. As a Sage system add-on, ShutDown from Data Developers Plus, Corp. will automatically close active user sessions after pre-set idle time periods expire or during periods when exclusive use of the system is required.

### Workflow Benefits

- ◆ Control the date and time that the accounting system will be shut down for maintenance, closings, backups, etc. Users will be logged out and will not be able to log back in during the specified time interval in ShutDown Maintenance.
- ◆ All users are logged out of the system at the specified time(s) with no user access (except for the administrator that set the shut down time). Users are notified in advance of a pre-scheduled log out and shut down.
- ◆ Shutdown also logs out Pro Alert Servers and Auto Print Servers.
- ◆ Users who are running a long process (reports, shipping etc.), will not be logged out until their process is completed.
- ◆ Shutdown begins to prompt users about a scheduled shutdown 3 hours prior to the actual time to provide time to finish work and prepare to be logged out.
- ◆ Shutdown makes it fast and easy to close out active user sessions on large LANs or WANs when necessary.
- ◆ There is an optional Shutdown setting that will log out a user after a specified idle period (like 30 minutes). The idle time interval is determined by the administrator. This Shutdown feature provides added data security for a company that wants to prevent accounting data access when an authorized user is no longer at their workstation.
- ◆ Shutdown installation requires a minor tweak to the Sage Pro ERP user level Class library.



**More Information**  
702-487-9711 x303 • [ads@ddpcorp.com](mailto:ads@ddpcorp.com)



Product specifications, availability and price are subject to change without notice.