



Item Pricing Grid

Manage Price Categories, Time Periods and Profits

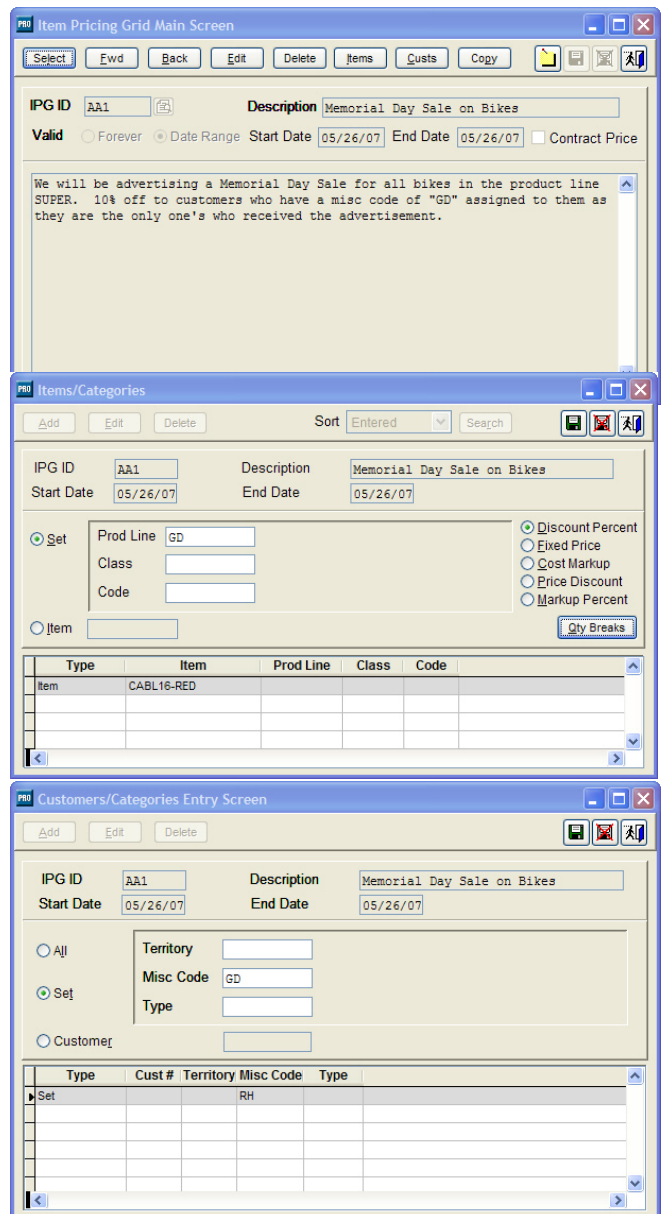
“Productivity Software Tools For Your Business”

January 2010
© All Rights Reserved

The Item Pricing Grid will help to simplify the set up and maintenance of the Sage Pro Series pricing scheme. The Item Pricing Grid (IPG) is flexible in both the Customer and Item setup processes.

Workflow Benefits:

- ◆ The IPG works with or without the Sage Pro current pricing schemes. The lowest calculated price from IPG or Sage Pro will be returned during order entry and invoice entry.
- ◆ All of the pricing options are available in Sage Pro: Discount Percent, Fixed Price, Cost Markup, Price Discount and Markup Percent, with 6 quantity levels.
- ◆ The IPG uses flexible pricing “groups.”
- ◆ Set up groups with permanent validation or for a date range. This is a valuable financial tool to manage special prices for a period that will begin and end on specific dates.
- ◆ Have the ability to specify that a price group belongs to all customers, a set of customers or only specific customers.
- ◆ Customer segments can be defined by any combination of Territory, Misc. Code and Type - all from the customer master screen.
- ◆ Assign items or groups of items based on combinations of Product Line, Class and Code.
- ◆ Copy an existing price group to a new price group.
- ◆ With the Contract Pricing feature a customer will get the “contract price” regardless of any other prices in the system. This is critical for companies that experience frequent general price changes but are required to honor fixed negotiated prices for specified periods of time.
- ◆ Print a management report to audit what prices customers are getting on which items.
- ◆ Source code for Sage Pro Series *is required* to install the IPG module.



[More Information](#)

702-487-9711 x303 • ads@ddpcorp.com



Product specifications, availability and price are subject to change without notice.

Data Developers Plus, Corp. • 8860 S. Maryland Pkwy. #109 • Las Vegas, NV 89123 • www.ddpcorp.com