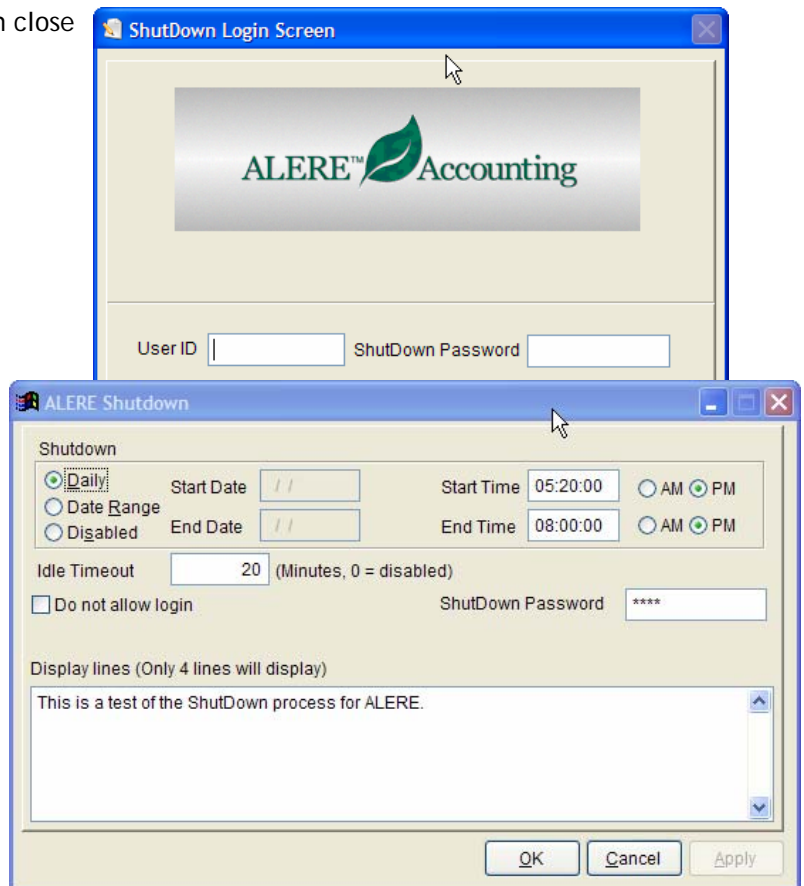


ShutDown for ALERE Accounting and Manufacturing provides the company network system administrator with user access controls to sensitive data in ALERE software applications. As an ALERE system add-on, ShutDown from Data Developers Plus, Corp. will automatically close active user sessions after pre-set idle time periods expire on workstations or during periods when exclusive use of the system is required.

Workflow Benefits

- ◆ Control the days and times that the ALERE system will be shut down for maintenance, closing, backups, etc. All users will be automatically logged out. User access remains closed during the time period specified in ShutDown Maintenance.
- ◆ Users are alerted in advance of the shut down process and then logged out of ALERE at the specified time. Only the administrator that set the shut down time has access.
- ◆ ShutDown will wait for users running a long process such as reports or shipping and then close them out when their process is completed.
- ◆ Users are alerted about the shutdown time 3 hours prior to the scheduled time so they can prepare to exit the system.
- ◆ ShutDown makes it easy to close everyone out of the system on large LANs or WANs.
- ◆ ShutDown will log out a user in the system after a specified idle period (like 30 minutes). The idle period is set by the system administrator. This feature provides additional system security for companies that would prefer not to have an ALERE screen displayed while a user is no longer at their workstation.
- ◆ ShutDown is easy to install with no modifications required to the ALERE system.
- ◆ ShutDown is compatible with all versions of ALERE.



[More Information](#)

702-487-9711 x303 • ads@ddpcorp.com