

# Table of Contents

Overview and Installation.....	2
Simple BOM Task List Layout .....	4
<b>Maintenance Menu</b>	
BOM Maintenance .....	5
BOM Component Changer .....	7
Weekly Default Schedule Maintenance .....	8
Recalculate WO Allocation.....	9
<b>Transaction Menu</b>	
Production Entry .....	10
Batch Production .....	13
BOM Cost Rollup .....	14
Weekly Schedule Builder .....	15
Import Productions.....	16
<b>Print Menu</b>	
Exploded BOM Report.....	17
BOM Forecasting/Scheduling Report .....	18
BOM Costing Report .....	19
Where Used Report .....	20
Production Report .....	21
Outdated BOM Report .....	22
<b>Technical Information and Support.....</b>	
Simple BOM Settings That Can Be Changed.....	24

# Overview and Installation

Methodology behind the Simple BOM module:

Simple BOM is designed for the smaller company that doesn't need or want a large, complex package to track manufacturing. Simple BOM implements quickly and operates intuitively.

- Track the processing, costs, locations and Inventory for Finished Goods.
- Multi-level Bills of Material.
- Simple production-entry maintenance.
- Multiple reporting options, including our popular Purchasing and Manufacturing Needs Report.
- Change a component across all Bills of Material with the Mass Component Change utility.
- Does not modify Sage Pro ERP source code.

## Installation of Simple BOM

### Unzip Files

Using Winzip, extract to the root of Sage Pro ERP. Make certain that the option for "Use Folder Names" in Winzip is checked so that the files are extracted into the correct directories.

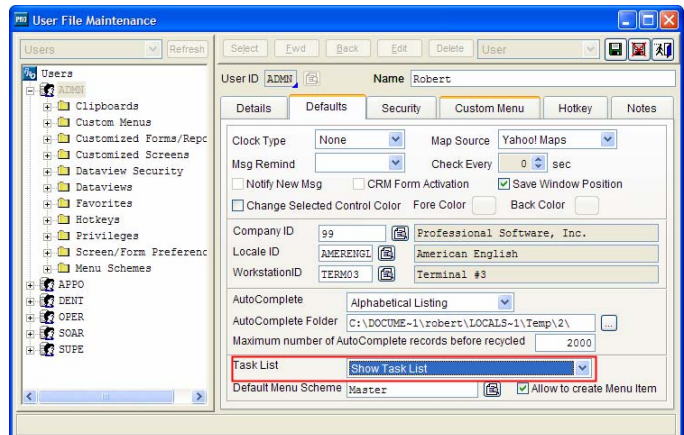
### Import the Data Dictionary and Update from Data Dictionary

Go into System Manager and import the data dictionary. (Maintain - Dictionary - Import/Export Data Dictionary) Choose to Import and then locate the DICT directory off the root of Pro that was created when you extracted the zip file.

Update from Data Dictionary (all users need to be out for this step). This is located in System Manager - Maintain - System Recover - Update from Data Dictionary. Choose the IC module for all companies and "Yes" to reindex all files.

### Add Simple BOM to the Task List

The Task List will need to be enabled for each user who will use the Simple BOM Module. This is in System Manager - Maintain Users. Edit the user and select "Show Task List" from the Task List option. Once this is enabled, the user will have access to the Task List from the Tool Bar and the View Menu. The Task List, and thus Simple BOM, can be accessed while in any module.



Import the Simple BOM options into the Task List tables (do this from Foxpro Access or full VFP)

- USE symmenu
- APPEND FROM dict\symmenu
  
- USE symmns
- APPEND FROM dict\symmns
  
- USE symfldr
- APPEND FROM dict\symfldr

Note: Due to the changes beginning with the SagePro 7.4 menuing architecture, our implementation off of the custom menu pad was no longer feasible. Therefore, we implemented the Simple BOM product using the Task Manager. If users want it on a classic menu, you can move the folders and options for Simple BOM around to existing module menus within the Task Manager. You will need to have the environmental variable PROALLOWTASKLIST = ON in order to actually do anything with the Task Manager options.

### Assign Simple BOM Privileges to Users

If these privileges are not available to assign to users, you will need to add them in System Manager - Maintain - Dictionary - Processes. Add them to the IC module and make sure to check the box on the bottom for Check Access Privileges.

BMKYCHG	Simple BOM Component Changer
BMMMAINT	Simple BOM Maintenance
BMPROD	Simple BOM Production Entry
BMREP1	Simple Exploded BOM Report
BMREP2	Simple BOM Forecasting/Sched Report
BMREP3	Simple BOM Costing Report
BMREP4	Simple BOM Where Used Report
BMREP5	Simple BOM Outdated BOM Report
BMREP6	Simple BOM Production Report
BMROLL	Simple BOM Cost Rollup
BMSCHED	Simple BOM Weekly Schedule Maint
BMWORK	Simple BOM Batch production

## Verify That Inventory Settings Are Correct

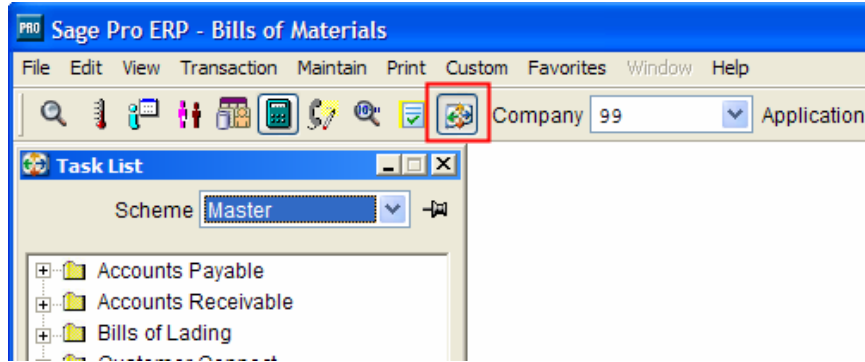
The screenshot shows the 'IC System Setup' window with the 'Multi Location' tab selected. The 'Entry Format for Location ID' is set to '!!!!!!'. The 'Drop Ship Location' is 'DROP'. The 'Use 'Stores'' checkbox is unchecked, and the 'Use 'Bins'' checkbox is checked. The 'Prevent blank Store and Bin locations for receipts' and 'Use Workstation Location for Location Default' checkboxes are also unchecked. The 'Default Location' is 'WH1'. The 'Stk/Rcpts/Ship' location is 'WH1'. The 'In-Transit' location is 'WH2'. The 'Mfg WIP' location is 'PLANT1' (highlighted with a red box). The 'Mfg Completion' location is 'PLANT2' (highlighted with a red box). The 'Store' and 'Bin' locations are empty. The 'Screen Label for Location' is 'Location', the 'Screen Label for Stores' is 'Store', the 'Screen Label for Bins' is 'Bin', and the 'Screen Label for Location (Abbreviation)' is 'Loct'.

Default Location	Stk/Rcpts/Ship	In-Transit	Mfg WIP	Mfg Completion
WH1	WH1	WH2	PLANT1	PLANT2
Store				
Bin				

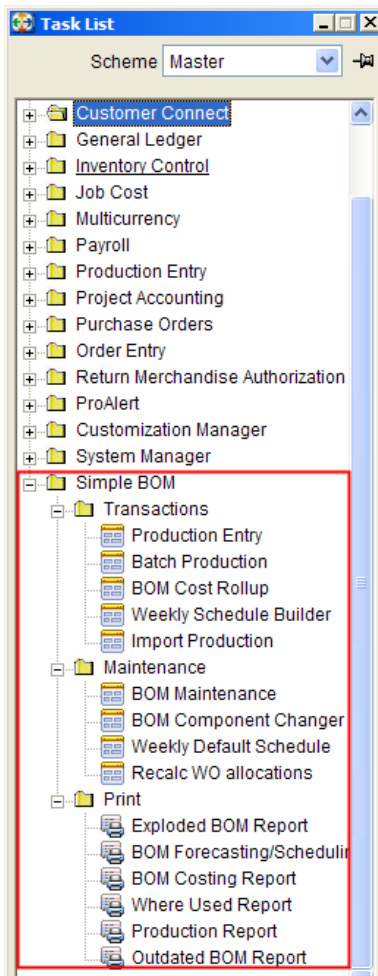
In Simple BOM, locations for the finished goods default to the Stk/Rcpts/Ship Location as set up in the Inventory Settings screen. You can change the finished good location when entering the Production Entry. Components default to the Mfg WIP location. If you manually allocate your components you could choose a different location at that time. If you only have one location set up it will utilize that location for both finished goods and components.

# Simple BOM Task List Layout

In Sage Pro, open the Task List and locate the folder for Simple BOM. To show the Task List, go under View - Task List - Show Task List or click on the button shown in the following screen shot.



If you cannot view the Task List, see the section above for "Add Simple BOM to the Task List". That section describes in detail how to enable the Task List.



# BOM Maintenance

The BOM Maintenance screen looks like the following:

You have the ability to assign a picture to the BOM and the ability to assign sequence numbers to the components. If you use a sub-assemblies, a Y will appear in the BOM column. The BOM is based on building a quantity of 1. Std Labor Time is not currently implemented. Instead, we recommend setting up a service item for each Labor type and assigning it to the BOM. This will allow labor to be rolled into the cost of the BOM.

Seq #	Part #	Description	BOM	U/M	Qty	Cost
10	CABL16-RED	Wire, 16ga, Red Vinyl	N	FT	2.000000	080
20	CSCA	Code Switch/Cable Assembly	N	EACH	1.000000	091
30	MOUSESRL	3-button Scrolling Ergonomic Serial Mouse	N	EACH	1.000000	900

## Steps to setting up a Bill of Material/Finished Good

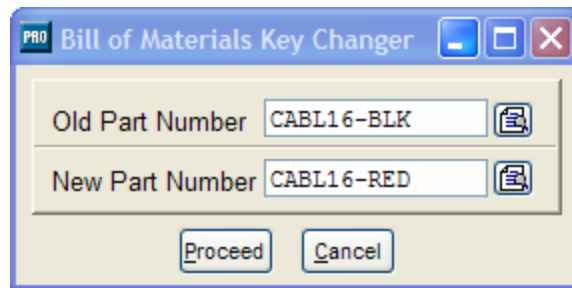
1. Set up your item in Sage Pro Item Maintenance.
2. Select the Sage Pro item as your BOM No. You have the option at this point to copy from an existing BOM if desired.
3. Enter in the creation date and last revision date. The dates will default to today's date. You can also choose a picture for the BOM if desired. The first button with "... " will bring up a directory/file selection for you to select the picture. The button with the looking glass with display the picture on the screen.
4. Click on the Save button. You will be prompted to add notes and components at this time.
5. The button with the looking glass will take you the Sage Pro Item Maintenance screen for the item you are working with.
6. The print button will Print the Bill of Materials Report by Item.

## Setting up the Components

1. If you did not choose to add components during the save of the BOM, you can do so here by clicking on the Add button in the lower portion of the screen. At this point you will simply select the Sage Pro item numbers that make up this BOM. You set the sequence number and the quantity used to produce 1 finished good.
2. Choose the Edit button on the bottom portion of the screen to edit the sequence or quantity of a component.
3. Choose the Delete button on the bottom portion of the screen to delete a component from this BOM.
4. Choose the Drill Down button on the bottom portion of the screen to view the details of a component that is also a Bill of Material. All items that have sub-assemblies have a "Y" in the BOM column in the grid. Simply select that sub-assembly component from the grid and it will bring you to the maintenance of the sub-assembly's Bill of Material.
5. By choosing the looking glass in the bottom portion of the screen, you will be taken to the Sage Pro Item Maintenance screen for the component part you are working with.

# BOM Component Changer

The Bill of Materials Key Changer is used to do a mass change of part number across all Bill of Materials. In the above example, all BOM's that have the A2EW component will be replaced by BACD when the Proceed button is selected.



# Weekly Default Schedule Maintenance

The Weekly Default Schedule Maintenance screen looks like the following:

This is the screen you will use if you already know the days and quantities of the finished goods you will be producing. Set the days and quantities up here for your finished good and then use the Weekly Schedule Builder under the Transaction Menu to build what you have scheduled.

Day	Quantity
Monday	5.000
Tuesday	0.000
Wednesday	3.000
Thursday	0.000
Friday	1.000
Saturday	0.000
Sunday	0.000

## Steps for setting up a schedule for a BOM

1. Choose the BOM/Finished Good you have already set up
2. Choose the location where the finished good quantity will be produced
3. Enter in the quantity to produce for the day or days desired

# Recalculate WO Allocations

Use this utility if your Alloc, WO and/or On Ord, WO fields on the Item Cost Usage screen do not appear correct.

The routine will go through all inventory items and reset the values as follows:

Finished Good: The On Ord, WO will increase by the qty to build number on each open Production Entry.

Components: The Alloc, WO will increase by the qty to build\*component qty for each open Production Entry

# Production Entry

The Production Entry screen looks like the following:

Production Entry

All items not validated

Production # 10

Header Detail Notes

Date Friday

Item PRODUCT1

Location WH1

Qty Produced 50

U/M EACH

Bin

Weight 0.00

Auto allocate components

Weight Produced

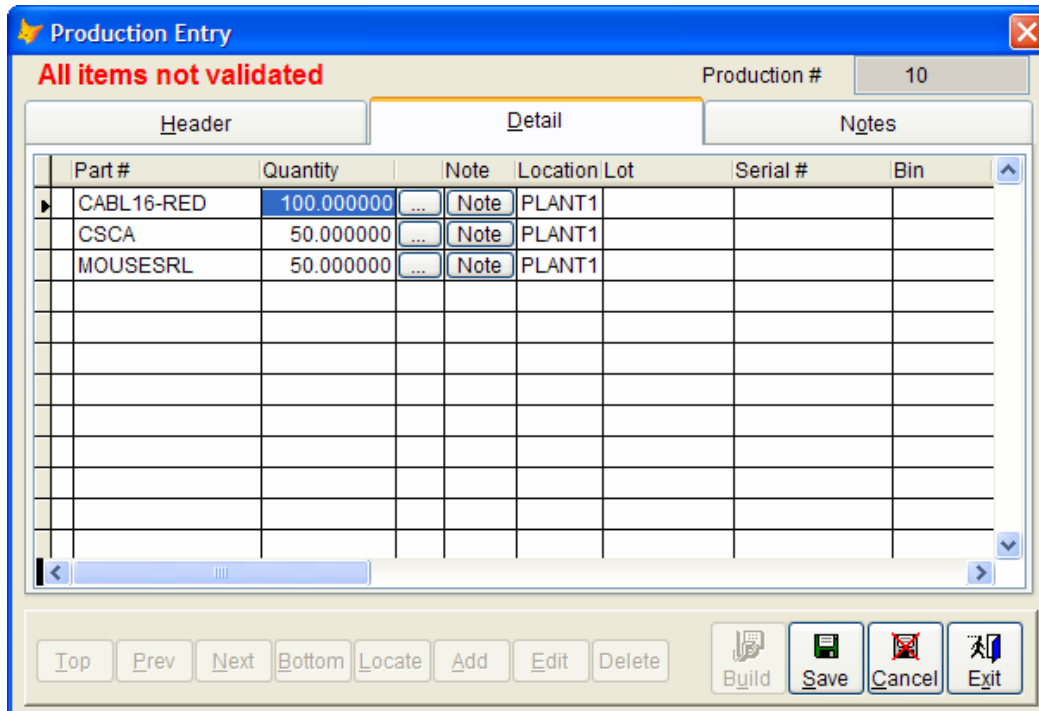
Top Prev Next Bottom Locate Add Edit Delete Build Save Cancel Exit

Production Entry consists of 3 tabs.

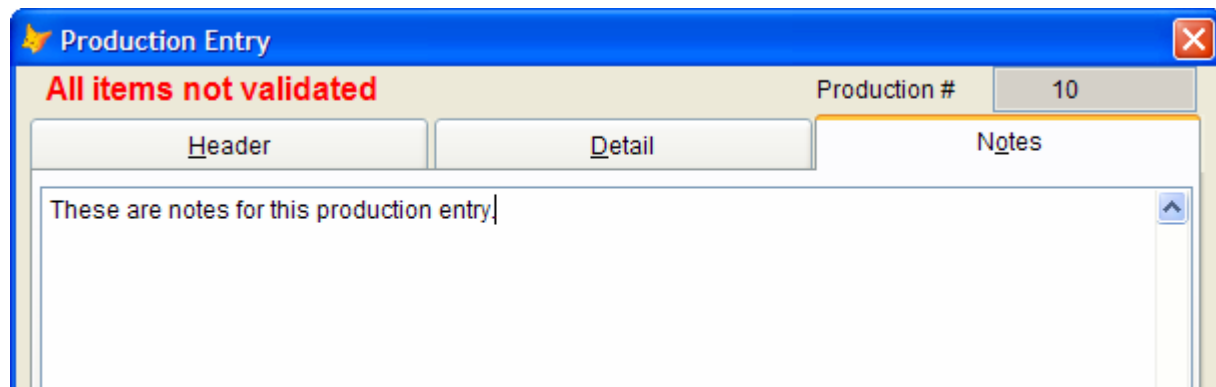
The header tab is where you define the Finished Good/BOM that you are building, how much you will produce, and where you will be putting it into inventory. If you have any combination of Location, Lot, Stores, or Bins turned on, it will also require this information before you can build the finished good.

**NOTE:** If you check the "Auto allocate components" check box, you will not be required to go to the detail screen to assign the component quantities. It will be done automatically and will prompt you only to select the lot or serial numbers of the components that are lotted or serialized.

The detail tab is where you assign the component quantities. If the components are lotted or serialized, you must assign the specific inventory before you can build the product (or check the Auto allocate box on the header screen). The \* in the first column denotes the item has been validated (component location, store, bin selected).



The Notes Tab is where you can enter production notes. These notes will print on the Production Report.



## Steps to setting up a Production Entry

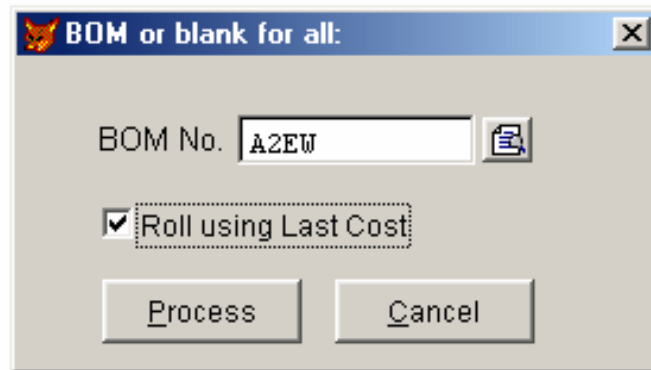
1. Click the Add button
2. Enter the date you want to produce this Finished Good. This allows you to enter in production ahead of time and then create production reports for a day, week, etc.
3. Select the BOM number you want to produce
4. Select the Location you want to post to. This defaults from the default stocking location and components default from the Mfg WIP location.
5. Enter the quantity you want to produce. This is the quantity that will be posted as a MFG receipt when you build this production entry.
6. If you have lots, stores, or bins turned on, you can enter this information. You may also leave it blank, but it will have to be filled in prior to building the production entry.
7. Either check the Auto Allocate Components Check box or go to the Detail tab (*This is a must-do step or you will see a red message at the top of the Header screen saying "All Items Not Validated" and you will not be able to build the production*). If Auto allocating, you will not need to do the following steps because the components will be assigned automatically. You will be prompted to select the components if they are lotted or serialized.
  - A. This is where you assign the components.
  - B. Enter the quantity or accept the default and hit the <enter> key. If the component is lotted, serialized, or you have stores and/or bins, or if the quantity is not available, you will be prompted to select the inventory. You can select inventory from anywhere that the item exists in the system.
  - C. Once you have selected all of the components you can save the production entry.
  - D. NOTE: Until you have assigned the component quantities, there will be a red note at the top of the screen saying "All items not validated".
  - E. NOTE: Once the item is validated you will see an \* in the first column.
  - F. The note defaults from the Bill of Material. You can also edit the notes at this point and you will see them on the production report. A good example of a production note would be a detailed manufacturing step that needs to be performed for this item during the process of building the finished good.

*See Step 8 on the following page...*





# BOM Cost Rollup



Use the Cost Rollup routine to change the cost of your BOM's based on the rolled up component costs. This is good to use in conjunction with the BOM Costing report.

**Important Note:** The component costs come from the default MFG WIP location as set up in the Inventory Settings Screen. The costs from the components will roll up from that location and populate the finished good item cost for all locations that the finished good is set up at.

## Steps for doing a BOM Cost Rollup

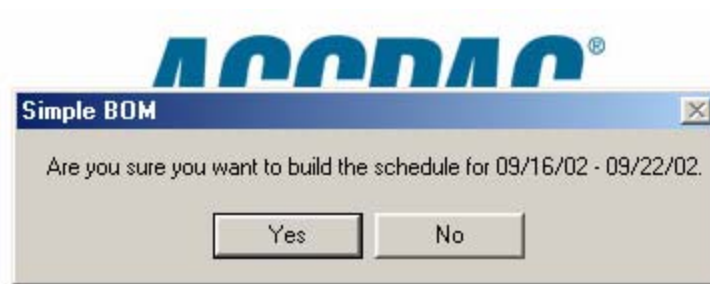
1. Choose a specific BOM Number or leave blank for all BOM's.
2. Check the box if you desire to use last cost, otherwise it will use the costing method you are set up to use (Weighted Average/LIFO/FIFO).
3. Click on the Process Button.

# Weekly Schedule Builder

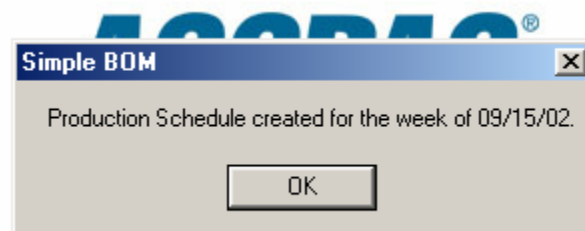
The weekly schedule builder will create production scheduling/work orders based on what you have set up in the Weekly Default Schedule Maintenance. This is a tool that can be run weekly to automatically create the defaults you have set up.

## Steps to Generate Production Scheduling based on the Weekly Schedule

1. Choose the menu option Weekly Schedule Builder
2. Answer Yes or No to the following prompt:



3. All of the production schedules will be created and you will be notified when the process is complete.



# Import Productions

To import Production Entry Orders, simply create a FoxPro table with the following fields. Populate the table with the following information:

Build = qty of finished good to build

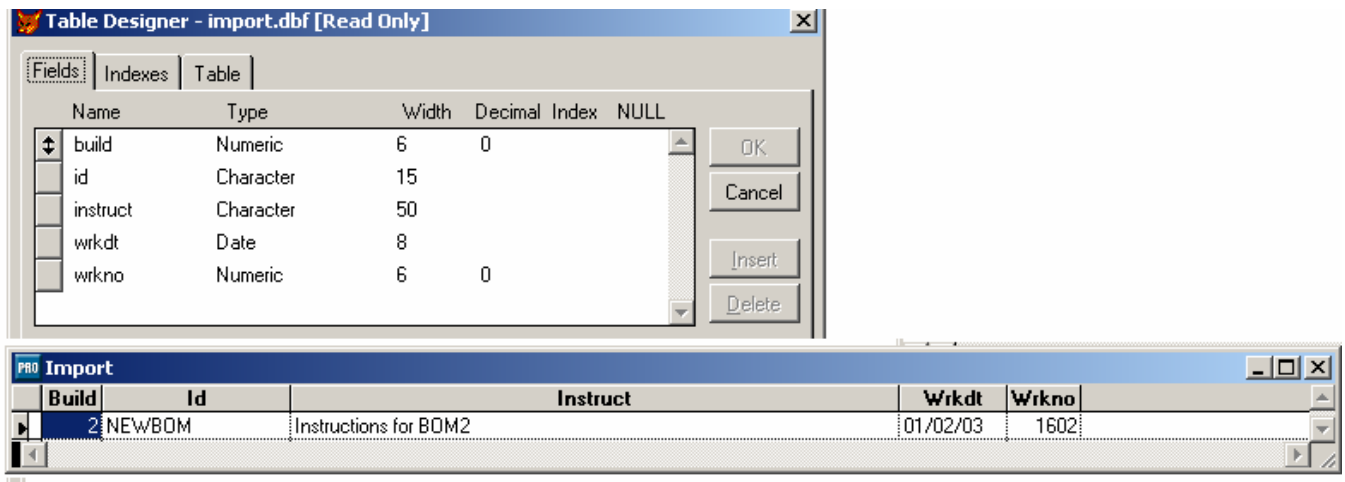
ID = Finished Good to build (BOM)

Instruct = Special instructions that will populate the header notes for that production entry

Wrkdt = Work Order date

Wrkno = Work Order number

It is required to fill in the build, id, wrkdt and wrkno.



1. Choose Import Productions from the Transaction Menu
2. Select the import database
3. You will be warned if a work order number that you are importing already exists. It will not complete the import with duplicates. Once you are prompted that the import is complete go to the Production Entry screen. Edit and then Save each production entry and the components will then be allocated. You can build the orders one at a time or use the Batch Production feature.

# Reports

## Exploded BOM Report/Bill of Materials Report by Item

This is the exploded BOM report. You have the ability to explode down through all sub-assemblies so that you can see all of the components that go to make up the particular BOM(s) that you enter.

Option Grid - Bill of Materials Report:		
Order By	{Class/Item,Item}	Item
Explode BOM?	{Yes/No}	Yes
Beginning Item	(first or blank for all)	
Ending Item	(last or blank for all)	
Item Class	(range or blank for all)	To

This is also the report you will use to determine what the actual total cost of a BOM is based on the costs of all of the component parts.

Page: 1  
Date: 09/18/02 at 11:23 AM

Professional Software, Inc.  
Bill of Materials Report by Item  
Item = A2EW

Current Cost: 0.0000  
Uninterruptible Power Supply Protection

Finished Part Id: A2EW

Components	Description	Qty. Needed	Make / Buy	Cost	Ext. Cost
BACD	Backup Drive, 3.0 GB Parallel/SCSI(w2 cartridges)	2.000	Make	217.8478	435.6957
.CABL16-BLK	Wire, 16ga, Black Vinyl	10.000	Buy		
CABL16-GRN	Wire, 16ga, Green Vinyl	5.000	Buy	2.8696	14.3481
CABL16-BLK	Wire, 16ga, Black Vinyl	10.000	Buy	3.1750	31.7503
<b>Total Cost:</b>					481.7942

### Option Grid Options:

- Order By: Class/Item or Item
- Explode BOM: Yes or No depending on if you wish to see a report showing all the BOM's exploded with a listing the components or just a top level listing of all the BOM's entered in the system
- Beginning Item: Enter the BOM number to start the reporting with or leave blank for all
- Ending Item: Enter the BOM number to end the reporting with or leave blank for All
- Item Class: Enter in an item class of BOM's or blank for all

# BOM Forecasting /Scheduling Report

This report is used for determining production requirements as well as purchasing requirements to fulfill the production. Everything is generated based off of the required date from the sales order in combination with the minimum stock levels in the system.

Field Name	Default Value	Current Selection
Include	{All/Allocation}	Allocation
Order By	{Item/Class/Date}	Item
Beg SO Item	(first or blank for all)	
End SO Item	(last or blank for all)	
Beg Part	(first or blank for all)	
End Part	(last or blank for all)	
Item Class	(range or blank for all)	To
Misc Code	(range or blank for all)	To
Date Range	(required date or blank for all)	/ / / /
Type	{Make/Buy/All}	Make
Show Demand	{Yes/No}	No
Show Onorder	{Yes/No}	No
Display For	{Shortage Only/All}	Shortage Only

Page: 1  
Date: 09/18/02 at 11:46 AM

Professional Software, Inc.  
Scheduling/Forecasting Report by Item

Material Code	Description	Required Qty	OnHand	Qty on Order	Type	Ship Date	Make/Order Date
A2EV	Uninterruptible Power Supply Protection <i>Cust # ACP1, SO # 170 Line # 1 Qty = 500.000 Need Date = 03/24/01</i> <i>Cust # ACP1, SO # 173 Line # 1 Qty = 1.000 Need Date = 03/23/01</i>	501.000	3,500.000		Make	03/23/01	03/23/01
						<b>Balance:</b>	<b>2,999.000</b>
						<b>On Hnd-Req+ On Ord:</b>	<b>5,899.000</b>
BACD	Backup Drive, 3.0 GB Parallel/SCSI(w2 cartridges) <i>Cust # ACP1, SO # 170 Line # 2 Qty = 200.000 Need Date = 03/24/01</i>	200.000	600.000		Make	03/24/01	03/24/01
						<b>Balance:</b>	<b>400.000</b>
						<b>On Hnd-Req+ On Ord:</b>	<b>840.000</b>

### Option Grid Options:

- Include: All for everything or Allocation for items that have demand from a sales order or a manufacturing demand
- Order By: Item/Class or by Class
- Beg SO Item: Enter in a beginning sales order item or blank for all
- End SO Item: Enter in an ending sales order item or blank for all
- Beg Part: Enter in a beginning item number to filter the output of the report
- End Part: Enter in an ending item number to filter the output of the report
- Item Class: Enter in a range or blank for all to pull specific sales orders
- Misc. Code: Enter a range or blank for all to pull specific sales orders
- Date Range: Enter a date range for the required date on sales order
- Type: Choose Make Items to see what you need to make, choose Buy to see what you need to purchase, or choose all to see everything
- Show Demand: Yes to see all the details of the sales orders that make up the required quantity demand
- Show On Order: Yes to see all the details of the purchase orders that make up the on order demand
- Display For: Shortage Only will only display items where onhand - required + onorder is less than 0.

## BOM Costing Report

This report is used to determine what the rolled up cost for a BOM would be based on the costs of the components. You can utilize the BOM Rollup off of the Transaction menu pad to revalue your inventory.

Option Grid - Costed BOM Report:		
Beginning Item	(first or blank for all)	A2EW
Ending Item	(last or blank for all)	A2EW
Item Class	(range or blank for all)	To
Type	{All,Variance}	All

Page: 1

Date: 09/18/02 at 12:06 PM

Professional Software, Inc.  
**Costed Bill of Materials Report by Item**  
 Item = A2EW Type = All

Prod Line	Item	Description:	Current Cost	Rolled Up Cost
ACCS	A2EW	Uninterruptible Power Supply Protection	\$37.58130	\$113.42905

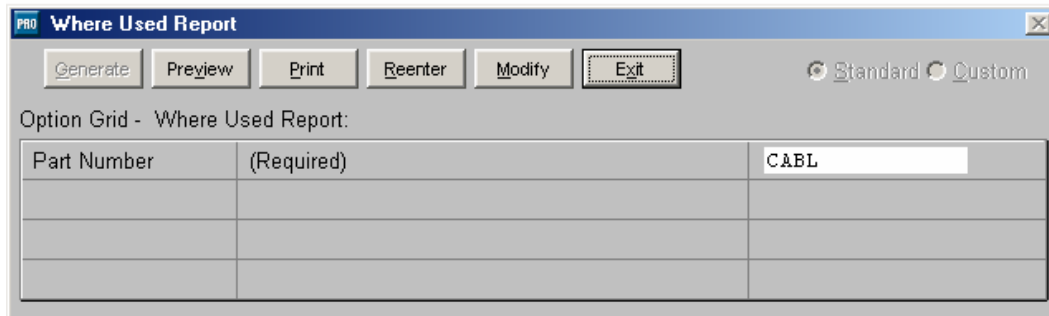
### Option Grid Options:

- Beginning Item: Enter the BOM number to start the reporting with or leave blank for all.
- Ending Item: Enter the BOM number to end the reporting with or leave blank for all.
- Item Class: Enter in an item class of BOM's or blank for all.
- Type: Choose All or Variance to see only the BOM's where the cost does not equal the cost of all the components rolled up.

**NOTE:** The component costs come from the default MFG WIP location as set up in the Inventory Settings Screen. The costs from the components will roll up from that location and populate the finished good item cost for all locations that the finished good is set up at.

## “Where Used” Report

This report is useful to determine what Bills of Material a particular component is used on. This can be used in conjunction with the BOM Component Changer to swap out one particular part for another one on all BOMs that it is located on.



<b>Page: 1</b>			
<b>Date: 09/18/02 at 12:15 PM</b>			
<b>Professional Software, Inc.</b>			
<b>Where Used Report</b>			
<b>Part # = CABL</b>			
<b>Part No:</b>	<b>Description:</b>	<b>Item:</b>	<b>Description:</b>
CABL16-BLK	Wire, 16ga, Black Vinyl	A2EW	Uninterruptible Power Supply Protection
CABL16-BLK	Wire, 16ga, Black Vinyl	BACD	Backup Drive, 3.0 GB Parallel/SCSI (w/2 cartridges)
CABL16-GRN	Wire, 16ga, Green Vinyl	A2EW	Uninterruptible Power Supply Protection

## Option Grid Options

Part Number: Enter in a part number to locate on all BOM's. You can enter only a portion of a part number. For example, CABL in the above example also found parts CABL16-BLK and CABL16-GRN.

# Production Report

Use this report to determine what components need to be picked to satisfy a particular production schedule.

Field	Description	Value
Date Range	(production date or blank for all)	/ / / /
Order By	{Item/Date/WO #}	Item
Beginning Item	(first or blank for all)	A2EW
Ending Item	(last or blank for all)	A23W
Beginning WO #	(first or blank for all)	
Ending WO #	(last or blank for all)	
Type	(Open/Closed/All)	Open

Page: 1  
Date: 09/18/02 at 12:27 PM

**Professional Software, Inc.**  
**Production Report**

**WO #:** 1  
**Production Item:** A2EW  
**Description:** Uninterruptible Power Supply Protection  
**Current Cost:** 37.58130  
**Date Required:** 03/23/01  
**Prod. Location:** WH1  
**Qty to Produce:** 5

Components	Qty Req'd	Description	Cost
CABL16-BLK	50.00000	Wire, 16ga, Black Vinyl	3.17503
CABL16-GRN	25.00000	Wire, 16ga, Green Vinyl	2.86963
BACD	5.00000	Backup Drive, 3.0 GB Parallel/SCSI(w2 cartridges)	217.84786

## Option Grid Options:

- Date Range: Enter in a date range to pull from the production scheduling
- Order By: Item, scheduled date or Work Order #
- Beginning Item: Enter the BOM number to start the reporting with or leave blank for all
- Ending Item: Enter the BOM number to end the reporting with or leave blank for all
- Beginning WO#: Enter in the beginning production number
- Ending WO#: Enter in the ending production number
- Type: Open productions/WO's, closed productions/WO's or all

## Outdated BOM Report

Use this report to see any BOM that hasn't been edited within the past year based on the revision date.

Option Grid - Outdated BOM Report:		
Beginning BOM	(first or blank for all)	<input type="text"/>
Ending BOM	(last or blank for all)	<input type="text"/>

Page: 1  
Date: 09/18/02 at 12:42 PM

Professional Software, Inc.  
Review Report

<u>BOM #</u>	<u>Description</u>	<u>Creation Date</u>	<u>Last Revision Date</u>
BACD	Backup Drive, 3.0 GB Parallel/SCSI(w2 cartridges)	09/18/02	09/18/00

### Option Grid Options:

Beginning Item: Enter the BOM number to start the reporting with or leave blank for all

Ending Item: Enter the BOM number to end the reporting with or leave blank for all

# Technical Information

## Program Listing

No Sage Pro ERP programs are modified for the Simple BOM Module.

### *Root Directory*

BM.PRG/FXP	Simple BOM main calling program
BMKYCHG.PRG/FXP	BOM Component Changer program
BMKYCHG.SCX/SCT/SPR/SPX/H	BOM Component Changer screen
BMMAIN.MNX/MNT/MPR/MPX	Simple BOM menu
BMMAINT.PRG/FXP	BOM Entry program
BMMAINT.SCX/SCT/SPR/SPX/H	BOM Entry screen
BMPEIMPT.PRG/FXP	Import Production Entries program
BMPIC.T.SCX/SCT	Assign a bitmap to a BOM screen
BMPROD.PRG/FXP	Production Scheduling program
BMPROD.PRG/FXP	Production Scheduling screen
BMPRODNOT.SCX/SCT	
BMRECALC.PRG/FXP	Recalculate Work Order Allocations
BMREP1.FRX/FRT	Exploded BOM Report form
BMREP2.FRX/FRT	Scheduling/Forecasting Report form
BMREP3.FRX/FRT	Costed BOM Report form
BMREP4.FRX/FRT	Where Used Report form
BMREP5.FRX/FRT	Outdated BOM Report form
BMREP6.FRX/FRT	Production Report form
BMREPT.PRG/FXP	BOM Report program
BMROLL.PRG/FXP	BOM Cost Roll-up program
BMROLL.SCX/SCT	BOM Cost Roll-up screen
BMSCHBLD.PRG/FXP	Weekly schedule building program
BMSCHED.PRG/FXP	BOM Schedule Maintenance program
BMSCHED.SCX/SCT	BOM Schedule Maintenance screen
BMSING.PRG/FXP	Production Scheduling Processing program
BMWORK.PRG/FXP	Batch Production Processing program
BMWORK.SCX/SCT	Batch Production Processing screen

### *SM Directory*

SYFILL.PRG/FXP	Determines component availability
SYFILL.PRG/FXP	Report form for insufficient quantities during allocation

### Simple BOM Tables:

No existing Sage Pro ERP tables are modified for the Simple BOM Module.

- BMHEAD## - Bill of Material Header file
- BMDETL## - Bill of Material Detail file
- BMTRAN## - Bill of Material Transaction file
- BMMACH## - Machine table for Scheduling

## Simple BOM settings that can be changed programmatically in BM.PRG

All of these settings are True with a stock system.

- gl\_goneg      Allows the ability to over-allocate components with insufficient on hand.
- gl\_display    To display browse of components that have insufficient on hands when auto-allocating.
- gl\_negfg      Allows you to enter in a negative production entry. This will then issue out the finished good and return the components to stock.
- gl\_autoneg    Takes the components negative without popping up the window to select where the insufficient quantity should come from. With this setting the entire amount will come from overship even if there is some on hand at another location.

## Technical Support

[support@ddpcorp.com](mailto:support@ddpcorp.com) or 702-487-9711 x303.

Sage Pro Series is a registered trademark of Sage Software Corp.

Product specifications, availability and price are subject to change without notice.