



Installation Guide

Auto ShutDown<sup>®</sup> - ALERE<sup>®</sup> Systems  
Accounting & Manufacturing

May 2011  
© All Rights Reserved

---

## Table of Contents

Installation	2
Functionality	3
ShutDown User Guide	4
Technical Information and Support	6

# Installation

## 1. Unzip the ShutDown Zip File

Using Winzip, extract the contents into the root directory of the ALERE application (accounting or manufacturing). One ShutDown module is required for each ALERE application. Make certain that the option for "Use Folder Names" in Winzip is checked so that the files are extracted into the correct directories.

See Technical Information on page 6 for a list of ShutDown files.

## 2. Setup a WSHOOK record for STARTUP

Locate the table WSHOOKS.DBF in the ALERE root directory. Open this table and add a record.

Use the following commands from the VFP command line contained in ALERE:

USE wshooks

BROWSE

Check to see if there is an existing STARTUP record. If there is, contact DDP regarding next steps.

CTRL-Y (Adds a new record)

(fill in the HOOKNAME with "STARTUP" and the HOOKCMD with "DO sdstartup")

<Escape key to close browse>

USE

EXIT (returns to the application)



# Functionality

Auto ShutDown provides the system administrator with the ability to define starting times for Shut-Down to automatically log people out of ALERE and prevent all users from logging back in for the time needed to complete maintenance routines and other system procedures. Auto ShutDown can also be set up to close an ALERE session that has been idle on a workstation beyond a pre-defined period of time.

Logging into ShutDown for the first time:

Log in with an ALERE login ID - leave the password blank.

A ShutDown password is entered in the second setup screen.

ShutDown issues administrative rights to the user who logs in with this ID and password - this will be the only log in allowed into the system during a shut down period. *Note: the ShutDown Administrator will not be logged out of ALERE during ShutDown times. However, the ShutDown administrator will be covered by the workstation idle time command if this routine is set up.*

Users will be notified that access is denied when attempting to log in to ALERE if the attempt is made during a scheduled shutdown period or when the system has been shut down for an unscheduled period of time.

Users who are logged in to ALERE in advance of a pre-scheduled shut down will be notified 3 hours in advance, then 2 hours, 1 hour, 45 minutes, 30 minutes, 15 min, 10, 5, 4, 3, 2, 1 as the system begins to log them out.

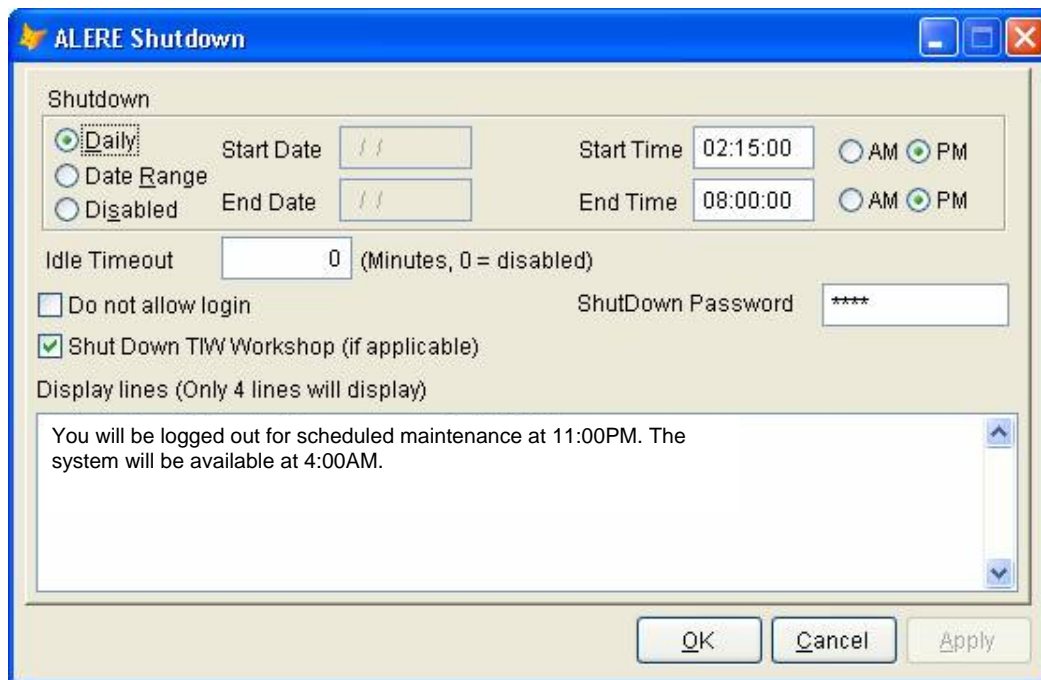
# ShutDown User Guide

Double click the desktop short cut to the Shutdwn.exe filename in the ALERE root directory.

Enter an ALERE user login ID but leave the Shut-Down Password field blank the first time Shut-Down is opened. A second screen will open the ShutDown period and other important information is defined. Enter a ShutDown password while in this screen to keep the system secure.



The second set up screen is shown below. Select the settings for scheduled shut down periods. All ShutDown settings are entered in this screen. See next page for more details. Click "OK" when all settings have been entered.



See the next page for more details to about the ShutDown system settings.

# ALERE ShutDown Settings

## ShutDown Password

Anyone with an ALERE user ID can log into ShutDown for the first time. A password setting is recommended to limit access to the ShutDown system settings.

## Daily or Date Range or Disabled

Create a *Daily* ShutDown schedule close all users out of ALERE at a specific time each evening so that a backup or reindex can be done on the system.

A *Date Range* would be used to get everyone out of the system today at noon or every day at noon this week while system maintenance is being done, such as a reindex.

If *Disabled* is turned on all settings in ShutDown will be cleared and the record in shutdown.dbf will be cleared out as well. To re-enable ShutDown, choose either daily or date range and enter new settings for ShutDown.

## Start Time and End Time

*Start Time* will be the time all users will be logged out of ALERE. ShutDown will not allow them to log back in until after the *End Time*.

It is important to note that the start and end times utilize the computer clock time on each workstation. So the time and AM/PM need to be correct on all workstations.

## Idle Timeout

Use the *Idle Timeout* to close an ALERE session on a workstation that has been idle (not used) for X number of minutes. This is a ShutDown security feature. For example, the GL person goes to lunch with an ALERE screen of confidential information displayed on the workstation. A ten minute Idle Timeout setting would log the user out of ALERE and remove the display after 10 minutes of workstation inactivity.

## Display Lines

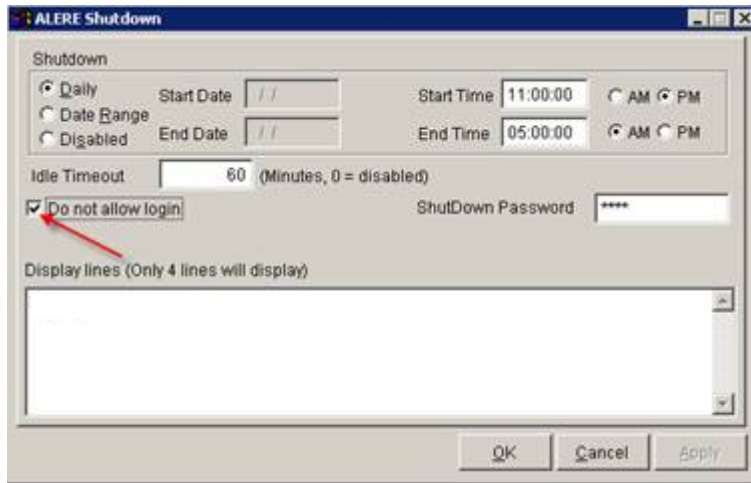
Enter a user message that the system will log them out with a reason for the shut down. This message will be displayed to the users with each warning they receive about the system shutting down at xx:xx:xx time.

## Do Not Allow Login

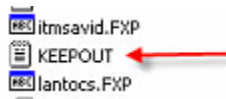
Turn on this toggle to prevent users from logging into the ALERE system during an unscheduled system shut down. With this turned on all users, including the administrator, will not be able to log back in until this toggle is turned off. This utility is designed to give the system administrator exclusive use to troubleshoot emergency problems. Note: turning on this toggle will not log off users who are currently in the system...each user needs to log out or the administrator closes user flags.

The Administrator will need to unlock ShutDown to allow users to log back in. See the “Do not allow Login screen below. There are two ways to unlock ShutDown.

1. The administrator turns off the toggle if an active log in was maintained during the unscheduled maintenance. Other users, including the administrator, will have access through normal log ins.
2. The “Keepout” file must be removed if the administrator logged out while “Do not allow login” was turned on. See instructions below.



KEEPOUT.txt is created in the ALERE root directory when “Do not allow login” is turned on (above). This file can be manually deleted from the ALERE root directory, if necessary, to re-open the ALERE system for user access.



### ShutDown Files

SHUTDOWN.EXE	Executable to set up ShutDown to reside in the root of ALERE
SHUTDOWN.PRG/FXP	Main ShutDown Program to reside in root of ALERE
SHUTDOWN.SCX/SCT/H	ShutDown Login Screen to reside in root of ALERE
SHUTDOWN1.SCX/SCT	Shutdown Maintenance Screen to reside in root of ALERE
SHUTDOWN.VCX/VCT	Holds ShutDown Timer to reside in root of ALERE
SDSTARTUP.PRG/FXP	Program added to WSHOOKS.DBF to load ShutDown on

### Technical Support

Please contact your ALERE reseller for technical support or Data Developers Plus [support@ddpcorp.com](mailto:support@ddpcorp.com) • 702-487-9711 x303

Product specifications, availability and price are subject to change without notice.

